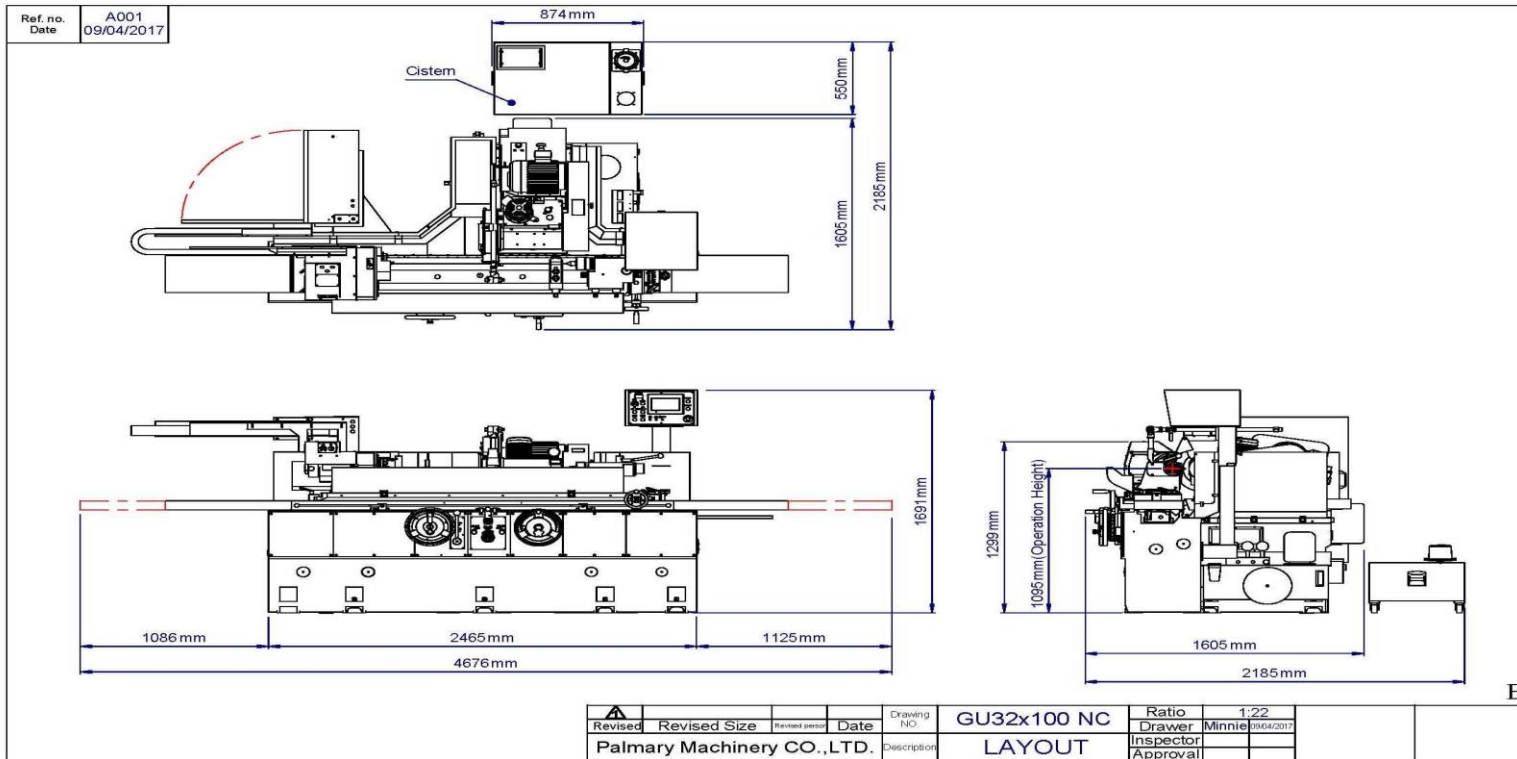


## ■ Machine Specification

<b>GU32x100NC</b>	
<b>Capacity</b>	
Distance between centers	1000 mm
Swivel over table	Ø320 mm
Max. load of centers	100 kg
Max. external grinding diameter	Ø300 mm
<b>Wheel head</b>	
Swivel angle	±30°
Manual distance	160 mm
Auto. rapid advance	40 mm
Sliding seat supplementary displacement	95 (total 295) mm
Min. setting unit	0.001 mm
One turn of handwheel (graduation)	2 (0.005) mm
<b>Grinding wheel</b>	
O.D. x width x I.D.	Ø405 x 50 x Ø127 mm
Speeds (belt-type)	1783 r.p.m. (50 Hz) / 1940 r.p.m. (60 Hz)
<b>Work spindle head</b>	
Swivel angle	120° (+90° , -30° )
Center taper	MT. 4
Spindle speed (variable)	10~300 r.p.m.
Max. load of spindle (tool holder included)	35 kg (max. length : 150 mm)
<b>Tailstock</b>	
Center taper	MT. 4
Stroke	25 mm
<b>Table</b>	
Swivel angle	-3° ~ +8°
Traverse speed	50 / 5400 mm/min
Auto. reciprocate min. stroke	8 mm
Feed of one turn of handwheel (2-step)	20 mm (2 mm)
<b>Motor</b>	
Wheel spindle	3.7 kW (4 P)
Workhead spindle	1.3 kW
Hydraulic pump	0.37 kW (4 P)
Wheel spindle lubrication pump	0.18 kW (4 P)
Coolant pump	0.18 kW (2 P)
Internal grinding spindle (opt.)	0.75 kW (2 P)
<b>Tank</b>	
Wheel spindle lubrication tank	9 L
Hydraulic tank	46 L
Coolant tank	110 L
<b>Machine weight</b>	
New weight	3200 kg

# Reference Layout



▲				Drawing	GU32x100 NC	Ratio	1:22	
Revised	Revised Size	Revised person	Date	NC		Drawer	Minnie	09/04/2017
Palmary Machinery CO.,LTD.				Description	LAYOUT	Inspector		
						Approval		

E

## ■ Features

### Grinding Wheel

- Size :  $\phi 405 \times 50 \times \phi 127$ mm
- Spindle Type : static pressure type
- Lubrication unit: Independent
- With Pressuer meter

### X Axis

- Moving type : AC Servo
- Control Type : NC Controller
- Slide : static pressure type

### Travas table

- Moving type : Hydrical
- Slide : static pressure type

### lubricating oil unit

- Give oil for X Axis and Travas Table.
- With oil pressure meter
- Oil pump + motor set

### Electronic

- 3phase、AC200V、50Hz
- Control circuit: standard circuit
- Opration Panal : In right side.

### Color

- Palmary standard